

BOCA AZUL - PHASE TWO

A REPLAT OF TRACTS 51 AND 52, AND P/O TRACTS 49, 50, 53, AND 54 OF BLOCK 72,
PALM BEACH FARMS COMPANY PLAT NO. 3, (P.B.2, PG.45-54)
SITUATE IN SECTION 5, TOWNSHIP 47 SOUTH, RANGE 42 EAST
PALM BEACH COUNTY, FLORIDA

PB 60

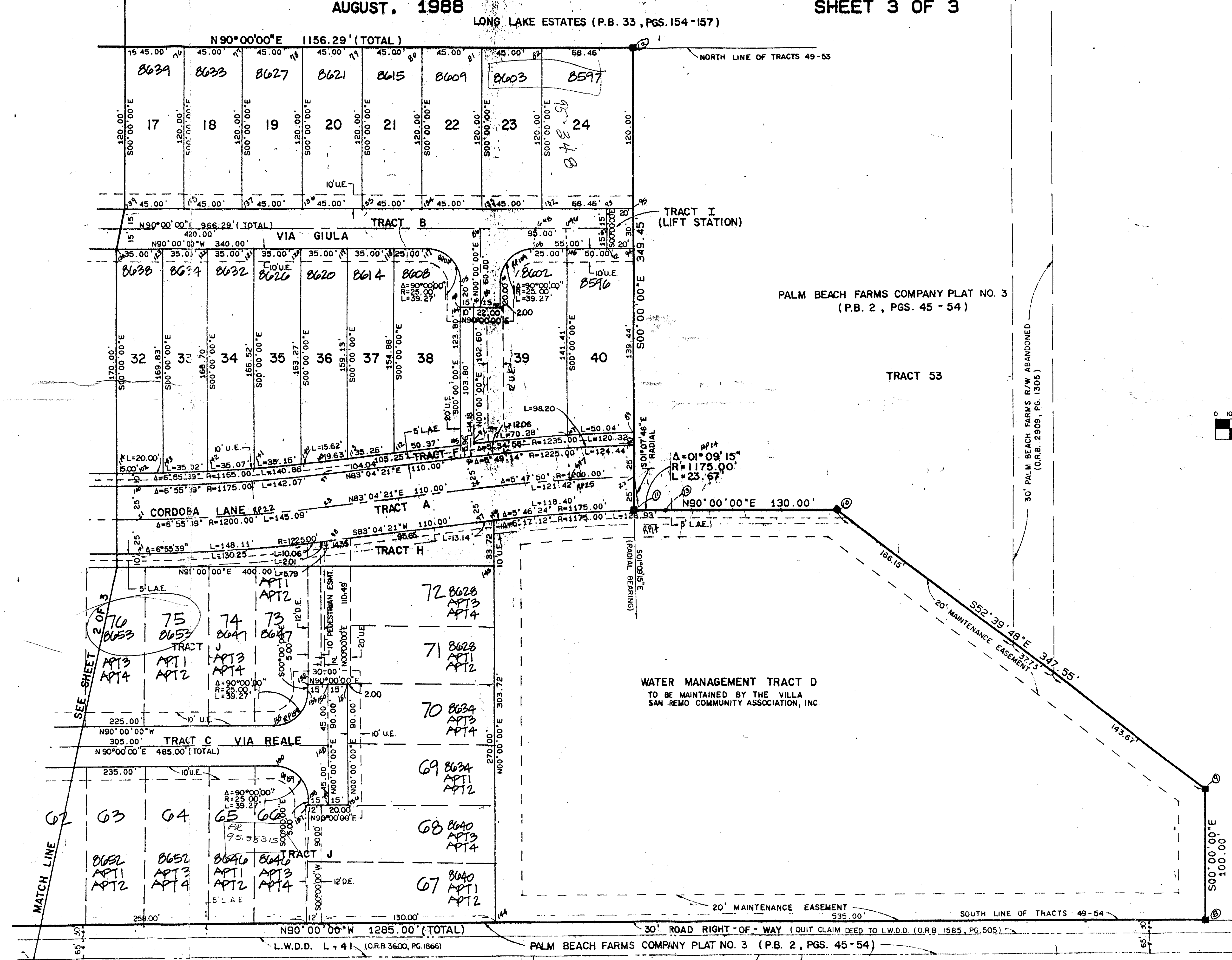
AUGUST, 1988

LONG LAKE ESTATES (P.B. 33, PGS.154-157)

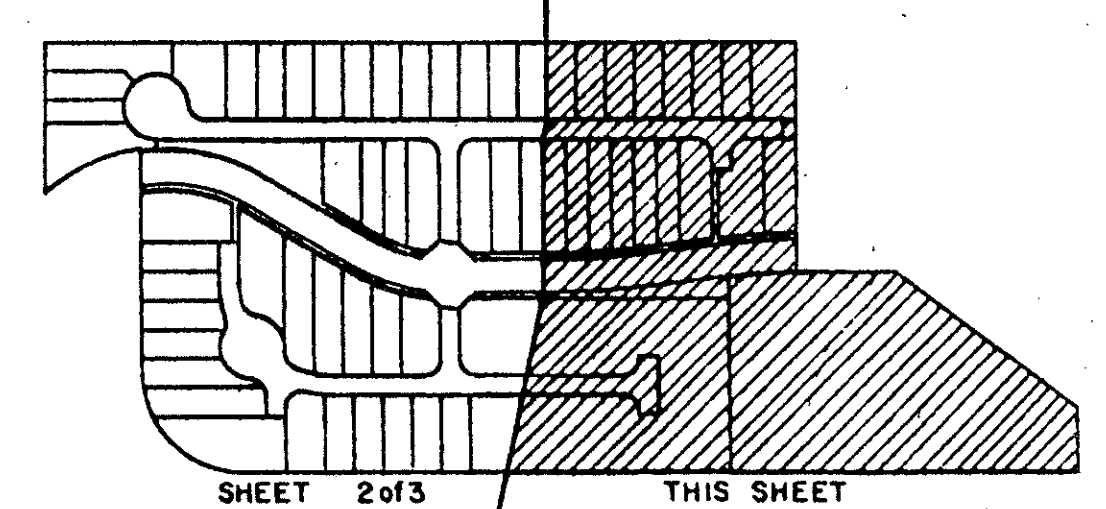
SHEET 3 OF 3

STATE OF FLORIDA
COUNTY OF PALM BEACH
THIS PLAT WAS FILED FOR
RECORD
THIS _____ DAY OF _____
AD, 1988 AND DULY RECORDED
IN PLAT BOOK _____ ON PAGES
_____ AND _____
JOHN B. DUNKLE, CLERK
BY: _____, D.C.

*80-115
X 15
2/19/94
5/3/3/M*



Reference



STANLEY/WANTMAN, INC.
2000 LOMBARD STREET, WEST PALM BEACH, FL 33407 561-842-7444

DRAWN M.R.	D.M.W.	DATE Feb. 1988
CHECKED W.B.H.	SCALE 1"=40'	
DRAWING NO. 09513PL2		

BOCA AZUL - PHASE TWO